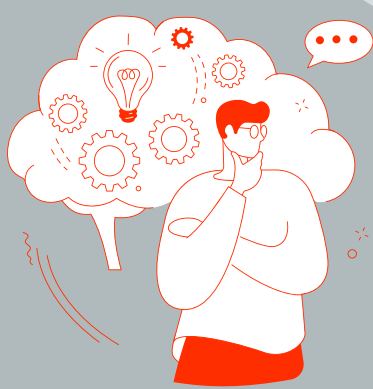




Quick Start Guide

SONOTRON MARK 2



Getting to Know Your Device

The Sonotron Mark 2 comes prepackaged with all of the necessary components to get your device working properly. Prior to starting the device, ensure all components are accounted for (refer to checklist on the back of this card).



Starting up SM2

To begin, connect the applicator cable (located on the front panel), and the power cable, (located at the back left corner). Once the connections are accounted for and secure; power up the device by pushing the "power" button indicated on the front right panel.



Treatment Ready

Once the device is powered on, an LCD display will illuminate indicating it is ready for treatment with the selected level of treatment. To change the treatment level, slide the lever below the LCD display to the right, middle, or left most positions and the level will be presented via the display.



Administering Treatment

Once the appropriate setting has been selected, grab the applicator and press the trigger button to begin treatment. Hold the applicator 2 in. away from the patient. Once the 15 second treatment is completed the LCD panel will display and begin a 5 second cooling period. Once the cooling period is complete SM2 is ready for more TU.



Powering Down SM2

To power down the Sonotron mark 2, simply push the power button, located at the front right corner on the main display. SM2 also comes with a locking feature. If you wish to lock the device, simply turn the key to the left, and the locking feature will be displayed on the LCD screen. To shut down SM2, switch the lever to "off" position, which is located on the back of the device.